

Todd & Brad Reed Photography and Rachel Gaudette

231-843-0777
ToddandBradReed.com
info@toddandbradreed.com

Scroll down to see all products available and our pricing.

Please pay attention to the * in the product descriptions which will explain shipping timelines
- Click [HERE](#) to view all prices -

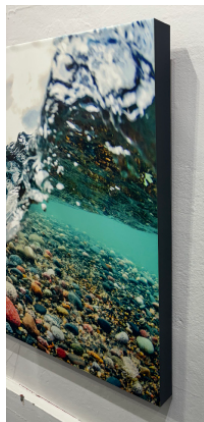
Explanation of product types:

We want every product that leaves the gallery to be as unique and marvelous as your experience.

TEAM REED'S Affordable Luxury Line - Ready to Hang

Team Reed's Affordable Luxury Line is a professional print on glossy paper, laminated on a piece of solid wood. These displays are easy to maintain and easy to hang. A economical alternative to our archival gallery wrap canvases. Your piece will be shipped to you completely assembled with a built-in cleat on the back. For quick and hassle-free hanging, wall hanging hardware will be included with your order. The edges are a clean black. An electronic version of Todd, Brad or Rachel's handwritten signature is placed on the file before it is printed.

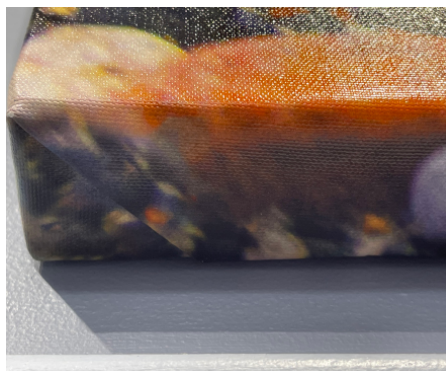
*Team Reed's Economy Line are printed off site and are shipped drop shipped directly from the print lab within 4 weeks after ordering + delivery time.



Canvases

Our archival gallery wrapped canvases are printed to the highest quality on 100% cotton canvas. We believe our work looks best on canvas. They have UV protection in the ink. We finish all of our canvas orders with a hand-written signature by Todd, Brad or Rachel (depending on whose image it is).

1 Gallery Wrapped Canvas These are hand stretched around custom wood frames here at our Ludington Gallery. This is our most popular format and what the majority of the pieces on the wall are in our downtown Ludington Gallery. The most popular size of the gallery wrapped canvas is our 26.6 x 40". We create the wrap portion that you see on the sides of the canvas so the entire image as we photographed it is shown on the front.



2 Loose Canvas - unframed. These will not have the additional canvas material necessary to wrap around a frame. Loose canvases require mounting onto high-density foam board & custom framing.

*All canvases (gallery wrap or loose) are printed off site and are shipped within 4 weeks after ordering + delivery time.

Metal Prints

These are durable metal prints with vibrant colors, brilliant luminescent images, and exceptional detail. Ultra-hard surface is waterproof/weatherproof and can be cleaned easily with a soft cloth. (Avoid direct sunlight to reduce fading over time). An electronic version of Todd, Brad or Rachel's handwritten signature is placed on the file before it is printed. Because of the nature of the material, metal prints do have glare, the amount depends on the type of light hitting them.

*Metal Prints are printed off site and are drop shipped directly from the print lab within 4 weeks after ordering + delivery time. These metal prints may be ordered in two ways.

1 Metal Prints - Ready to Hang Float Mount Hangers and Rounded Corners

The Float Mount Hangers are attached to the back of the print, and float the print 1/2 inch off the wall when hung. These are READY-TO-HANG. These Metal Prints are finished as is, and no framing or glass is needed.



2 Metal Prints - NO Frame or Mount and SHARP corners (These REQUIRE custom framing).

These metal prints are meant to be custom framed. There is NO mount on them, so as is, they will not come ready-to-hang. These REQUIRE custom framing. The corners will be sharp - as we have found this is best for framing metal prints. You will have to take them to a frame shop or mount and frame them yourself.

We recommend Rob at Timeless Picture Framing. He is now located inside our downtown Ludington gallery!

Rob's phone number is 231-233-2221. He is by appointment only so please call first!

Below is one example of a custom framed metal piece.



Traditional Prints Only

Our traditional prints come printed on Luster Photo Paper. These prints require glass over the print or a laminate. You can mat AND frame them, or just frame them. An electronic version of Todd, Brad or Rachel's handwritten signature is placed on the file before it is printed.

- * 7, 15, 18 and 24 inch traditional prints are shipped within 5 business days + delivery time.
- * Traditional prints larger than 24 inches are printed off site and are shipped 3 weeks after ordering + delivery time.

Matted Traditional Prints

Our traditional prints come printed on Luster Photo Paper. An electronic version of Todd, Brad or Rachel's handwritten signature is placed on the file before it is printed.

- * Matted traditional prints are shipped within 5 business days + delivery time.

Matted - 15 inch prints

Our 10 x 15 inch prints are matted in a single Arctic white mat with an integrated black bevel. The outside dimensions of this mat is a standard 16 x 20", which makes it easier and more affordable frame.



- All photographs are measured by their longest side.
- We measure only the photograph, not the paper or mat.
- Traditional prints use photo paper.
- Electronic signature = An electronic version of Todd, Brad or Rachel's handwritten signature is placed on the file before it is printed.

TEAM REED'S AFFORDABLE LUXURY LINE - FREE SHIPPING - Electronic signature

An economical alternative to our archival gallery wrap canvases.

(A professional print on glossy paper, laminated on a piece of solid wood. The edges are a clean black.)

- 24 inch print (16 x 24) 1 inch depth = \$200
- 30 inch print (20 x 30) 1 1/2 inch depth = \$275
- 36 inch print (24 x 36) 1 1/2 inch depth = \$350

FREE SHIPPING

Item drop ships directly from print lab.

READY-TO-HANG ARCHIVAL "GALLERY WRAP" CANVASES - Hand signed

(ARCHIVAL canvases are stretched over a hidden frame with the hanging wire in place)

- 18 inch canvas (12 x 18) = \$420
- 24 inch canvas (16 x 24) = \$500
- 30 inch canvas (20 x 30) = \$625
- 40 inch canvas (26.6 x 40) = \$850
- 50 inch canvas (33.3 x 50) = \$1200
- 57 inch canvas (38 x 57) = \$1400
- 75 inch canvas (50 x 75) = \$2800
- 40 inch panoramic canvas (13.5 x 40) = \$575
- 50 inch panoramic canvas (16.67 x 50) = \$725
- 57 inch panoramic canvas (19 x 57) = \$850
- 70 inch panoramic canvas (23.3 x 70) = \$1150
- 84 inch panoramic canvas (30 x 84) = \$1550

SHIPPING: 18 - 24 inch = \$30 30 inch = \$45
40 inch = \$65 All other sizes = Shipping Quote Upon Order

- 75 inch Triptych 3-piece canvas (each piece is 25 x 50 inches / final triptych is 50 x 75 inches) = \$2700
- 90 inch Triptych 3-piece canvas (each piece is 30 x 60 inches / final triptych is 60 x 90 inches) = \$3500
- 90 inch panoramic triptych canvas (each piece is 30 x 30 inches / final triptych is 30 x 90 inches) = \$2200
- 114 inch panoramic triptych canvas (each piece is 38 x 38 inches / final triptych is 38 x 114 inches) = \$3500

LOOSE CANVASES - Unframed - Hand signed

*These archival canvases WILL NOT have the additional canvas material necessary to wrap around a frame (Canvases require mounting onto high-density foam board & framing). We recommend Rob at Timeless Picture Framing.

- 24 inch canvas (16 x 24) = \$230
- 30 inch canvas (20 x 30) = \$330
- 40 inch canvas (26.6 x 40) = \$500
- 50 inch canvas (33.3 x 50) = \$645
- 57 inch canvas (38 x 57) = \$850
- 30 inch panoramic canvas (10 x 30) = \$250
- 40 inch panoramic canvas (13.5 x 40) = \$325
- 50 inch panoramic canvas (16.67 x 50) = \$400
- 57 inch panoramic canvas (19 x 57) = \$480

SHIPPING: All Sizes = \$25

TRADITIONAL PRINTS (print only, not matted or framed) - Electronic signature

- 7 inch print (5 x 7) = \$15
- 15 inch print (10 x 15) = \$35
- 18 inch print (12 x 18) = \$60
- 24 inch print (16 x 24) = \$100
- 30 inch print (20 x 30) = \$350
- 40 inch print (26.6 x 40) = \$525
- 50 inch print (33.3 x 50) = \$675
- 57 inch print (38 x 57) = \$850
- 18 inch panoramic print (6 x 18) = \$45
- 24 inch panoramic print (8 x 24) = \$75
- 30 inch panoramic print (10 x 30) = \$250
- 40 inch panoramic print (13.5 x 40) = \$325
- 50 inch panoramic print (16.67 x 50) = \$425
- 57 inch panoramic print (19 x 57) = \$500

SHIPPING: 7-18 inch = \$12
24 inch & Larger = \$25

We package as many items together as we can safely do - to lower the total shipping amount paid.

READY-TO-HANG "METAL PRINTS"

Electronic signature

Float mount and rounded corners.

- 18 inch print (12 x 18) = \$250
- 24 inch print (16 x 24) = \$385
- 30 inch print (20 x 30) = \$540
- 40 inch print (26.6 x 40) = \$1000

No Mount METAL PRINTS

Electronic signature

Custom Framing Required! No mount for hanging and has sharp corners.

- 18 inch print (12 x 18) = \$230
- 24 inch print (16 x 24) = \$365
- 30 inch print (20 x 30) = \$520
- 40 inch print (26.6 x 40) = \$980
- 50 inch print (33.3 x 50) = \$2100
- 57 inch print (38 x 57) = \$2495
- 50 inch print PANO (16.67 x 50) = \$1350
- 57 inch print PANO (19 x 57) = \$1600
- 84 inch print PANO (28 x 84) = \$2900

FREE SHIPPING

Item drop ships directly from print lab.

MATTED PRINTS

Arctic white mat with an integrated black bevel

- 15 inch traditional print in mat = was \$85 **NOW \$55**
(outside dimension of mat is 16 x 20 inches)

SHIPPING = \$20

For each additional print shipping to same shipping address add \$5 to shipping cost.

PICTURE PERFECT WORKSHOP VIDEO SERIES - available online only - \$95

Now, in the comfort of your own space and at your own pace, you are able to participate in our Picture Perfect Workshop Video Series! With over seven and a half hours of video instruction, you will learn all of Todd and Brad Reed's and Rachel Gaudette's secrets to operating your camera on full manual mode. You will also learn their 20/20 Vision concepts that will help you build stronger, more power, and more beautiful compositions. They will help YOU become a better story teller with YOUR camera and YOUR vision. Prerequisite to all other in person workshops.

*** Read online about our other workshops.**

ToddandBradReed.com

BOOKS & DVD's

- Todd Reed: 50 Years Seeing Michigan Through a Lens

Book = \$120 **SHIPPING = \$20**

- 366 Days of Beauty in the Year 2020

by Brad Reed and Rachel Gaudette = \$80

SHIPPING = \$10

- Todd Reed: 50 Years Seeing Michigan Through a Lens

LIMITED EDITION Package = from \$1100 - \$1325

FREE SHIPPING

- Take Time For Joy

Book = \$20 **SHIPPING = \$10**

- They Call Me Eagle Eyes: A Picture Book For All Ages

1 - 4 books \$25 each

5 - 14 books \$22 each

15 + books \$19 each

SHIPPING for They Call Me Eagle Eyes book

1-4 books \$10 total 5-14 books \$15 total 15 - 25 books \$20 total 25 - 35 books \$30 total

CALENDARS / MAGNETS / ORNAMENTS / SHIRTS

- Calendars

SHIPPING = \$12

1 for \$25

For each additional calendar shipping to same address add \$1 to shipping cost.

2 for \$44

3 or more for \$18.75 each

- Magnets: \$9 each

- Great Lakes Gear shirts: \$50 each

- Ornaments: \$14 each

SHIPPING starts at \$12

We will ship as many of these products together as possible for the \$12

We package as many items together as we can safely do - to lower the total shipping amount paid.